

205.2



FRANCO DONATONI

# LUMEN

per sei strumenti

(1975)

EDIZIONI SUVINI ZERBONI - MILANO

*Strumenti:*

*Ottavino  
Clarinetto basso in si bemolle (in suoni reali)*

*Celesta  
Vibrafono*

*Viola  
Violoncello*

*Diesis e bemolle alterano solo la nota davanti alla quale sono posti.*

*Durata: 4'30" circa*

# LUMEN

per sei strumenti

FRANCO DONATONI

1  $\text{♩} = 49$  2

Ottavino

Clarinetto  
bassoin Sib

Celesta

Vibrafono  
*bracc. dure = (motore spento)*  
*ppp*

Viola  
*ppp*  
*3 pizz.*

Violoncello  
*pizz. ppp*  
*sord.*

3 4

5

6

7

8

9 10

Handwritten musical score for measures 9 and 10. The score is written on a grand staff (treble and bass clefs) and a lower system (two staves). The notation includes various chords, accidentals, and a sixteenth-note triplet in the lower system. A double bar line with two slashes is present at the end of the system.

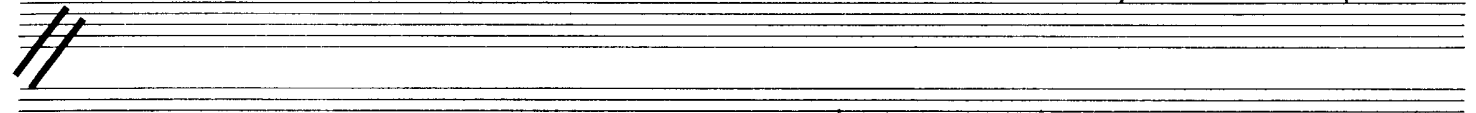
11 12

Handwritten musical score for measures 11 and 12. The score is written on a grand staff (treble and bass clefs) and a lower system (two staves). The notation includes various chords, accidentals, and a sixteenth-note triplet in the lower system.

13

14

Handwritten musical notation for measures 13 and 14. The notation is written on a grand staff with treble and bass clefs. It includes various chord symbols such as #, b, and bb, and rhythmic markings like '3' and '7'. The notation is somewhat sketchy and appears to be a student's work.



15

16

Handwritten musical notation for measures 15 and 16. Similar to the previous system, it features a grand staff with treble and bass clefs, chord symbols, and rhythmic markings. The notation is handwritten and somewhat informal.

17 18

*ppp* { *(respirazione il più inavvertita possibile)*

*ppp*

*pp* *sempre senza pedale*

*(bacci morbide)*

*arco, bb*

*arco, bb*

*punta batt.*

19 20

*(non cresc.)*

21 22

Handwritten musical score for measures 21 and 22. Measure 21 features a melodic line with a wavy line above it and a bass line with a circled chord. Measure 22 continues the melody and includes a sixteenth-note triplet in the bass line. A double bar line with two slashes is at the end of the system.

23 24

Handwritten musical score for measures 23 and 24. Measure 23 has a triplet in the melody and a circled chord in the bass. Measure 24 has a sharp sign above the staff and a circled chord in the bass. The system ends with a double bar line and two slashes.



25

Handwritten musical score for measures 25 and 26. The score is written on five systems of staves. The first system shows measures 25 and 26 with a '6' above the staff. The second system continues with measures 25 and 26, featuring a '6' above the staff and a circled chord in measure 26. The third system shows measures 25 and 26 with a '6' above the staff. The fourth system shows measures 25 and 26 with a '6' above the staff. The fifth system shows measures 25 and 26 with a '6' above the staff. The score includes various musical notations such as notes, rests, and accidentals.

27

Handwritten musical score for measures 27 and 28. The score is written on five systems of staves. The first system shows measures 27 and 28 with a '6' above the staff. The second system continues with measures 27 and 28, featuring a '6' above the staff and a circled chord in measure 27. The third system shows measures 27 and 28 with a '6' above the staff. The fourth system shows measures 27 and 28 with a '6' above the staff. The fifth system shows measures 27 and 28 with a '6' above the staff. The score includes various musical notations such as notes, rests, and accidentals.



33

34

Musical notation for measures 33 and 34, top system. The treble clef staff contains a melodic line with slurs and ties. The bass clef staff contains a bass line with slurs and ties.

Musical notation for measures 33 and 34, middle system. The treble clef staff contains chords and melodic fragments, with some notes circled. The bass clef staff contains chords and melodic fragments, with some notes circled.

Musical notation for measures 33 and 34, bottom system. The treble clef staff contains chords and melodic fragments. The bass clef staff contains chords and melodic fragments.



36

Musical notation for measures 35 and 36, top system. The treble clef staff contains a melodic line with slurs and ties. The bass clef staff contains a bass line with slurs and ties.

Musical notation for measures 35 and 36, middle system. The treble clef staff contains chords and melodic fragments, with some notes circled. The bass clef staff contains chords and melodic fragments, with some notes circled.

Musical notation for measures 35 and 36, bottom system. The treble clef staff contains chords and melodic fragments. The bass clef staff contains chords and melodic fragments.

37

38

39

40

*ppp, sempre*

*ppp, sempre*

*punta ppp, sempre tast.*

41

6 42 3 6

6 (alla corda) v v

43

6 44 6

6 v v 6

45

Handwritten musical score for measures 45-47. It features a treble and bass clef system with complex melodic lines and chordal accompaniment. Measure numbers 45, 46, and 47 are indicated. Fingerings 6 and 7 are shown above notes. A double bar line is present at the end of measure 47.

Handwritten musical score for measures 48-50. It features a treble and bass clef system with complex melodic lines and chordal accompaniment. Measure numbers 48, 49, and 50 are indicated. Fingerings 3 and 7 are shown above notes. A double bar line is present at the end of measure 50.

47

Handwritten musical score for measures 48-50. It features a treble and bass clef system with complex melodic lines and chordal accompaniment. Measure numbers 48, 49, and 50 are indicated. Fingerings 6 and 7 are shown above notes. A double bar line is present at the end of measure 50.

Handwritten musical score for measures 51-53. It features a treble and bass clef system with complex melodic lines and chordal accompaniment. Measure numbers 51, 52, and 53 are indicated. Fingerings 6 and 7 are shown above notes. A double bar line is present at the end of measure 53.

49

53

54

55

56

Handwritten musical score for guitar, measures 53-56. The score includes a treble clef staff with melodic lines and a bass clef staff with chordal accompaniment. Measure 53 features a 5-fingered scale and a 9-fingered scale. Measure 54 continues with similar patterns. Measure 55 includes a 6-fingered scale and a 10-fingered scale. Measure 56 continues with a 12-fingered scale. The bass staff shows various chord voicings and strumming patterns, including a double bar line in measure 55.



57

*bach. dure*

*ff, legno balz. pont.*

59

60

*(motore vibrato lento)*

arco *sf*

arco *sf*

61

62

*Spaghere motore*

*pp subito*

63

64

*pp subito*

Handwritten musical score for measures 65-68. The score consists of several staves. Measure 65 features a sixteenth-note run in the upper staff with a *pp* dynamic and a slur marked '6'. Measure 66 continues with a similar run, marked *ppp*. A double bar line with a downward arrow is placed between measures 66 and 67. Measure 67 shows a *pp* dynamic and a slur marked '6'. Measure 68 begins with a *pppp* dynamic and a slur marked '6'. The lower staves contain chordal accompaniment with dynamics *pp* and *sf*. A performance instruction 'punta pont.' is written above the lower staves. The score concludes with a double bar line and a downward arrow.

69

70

ppp o. (#.)

(con pedale, sempre)

ppp

metare

p vibrato lento mp mf

tast.

tast

tast

71

pppp

pppp

continua ad libitum sino all'estinzione del vibrafono

f (pont.) (l.r.) (tast.)

(sino all'estinzione del vibrafono)

(pont.) (tast.)

